



CORPORATE SPONSORSHIP



Image courtesy of City of San Antonio

ABOUT SISTER CITIES INTERNATIONAL (SCI)



SCI is the oldest and largest global network of volunteer citizen diplomats with the mission to promote peace through mutual respect, understanding, and cooperation...

ONE INDIVIDUAL, ONE COMMUNITY AT A TIME.

MORE THAN



400+

MEMBERS

Representing over 400 U.S. cities, counties, and states.

DEVELOPED



1800+

PARTNERSHIPS

Engaged with 1800 partnerships worldwide.

REACHING

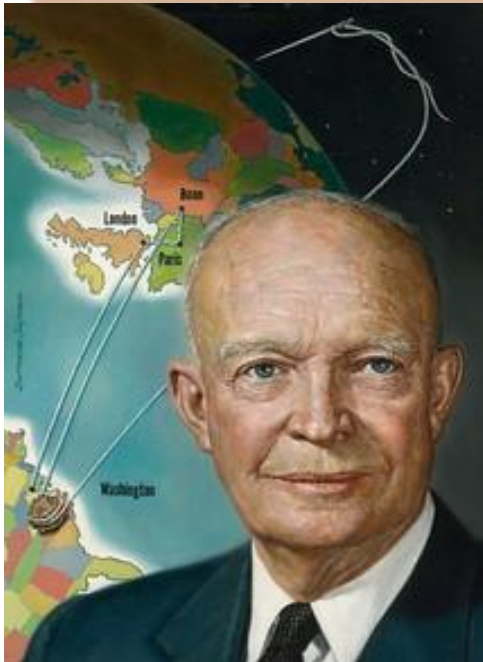


136+

COUNTRIES

Active in 136 countries and growing.

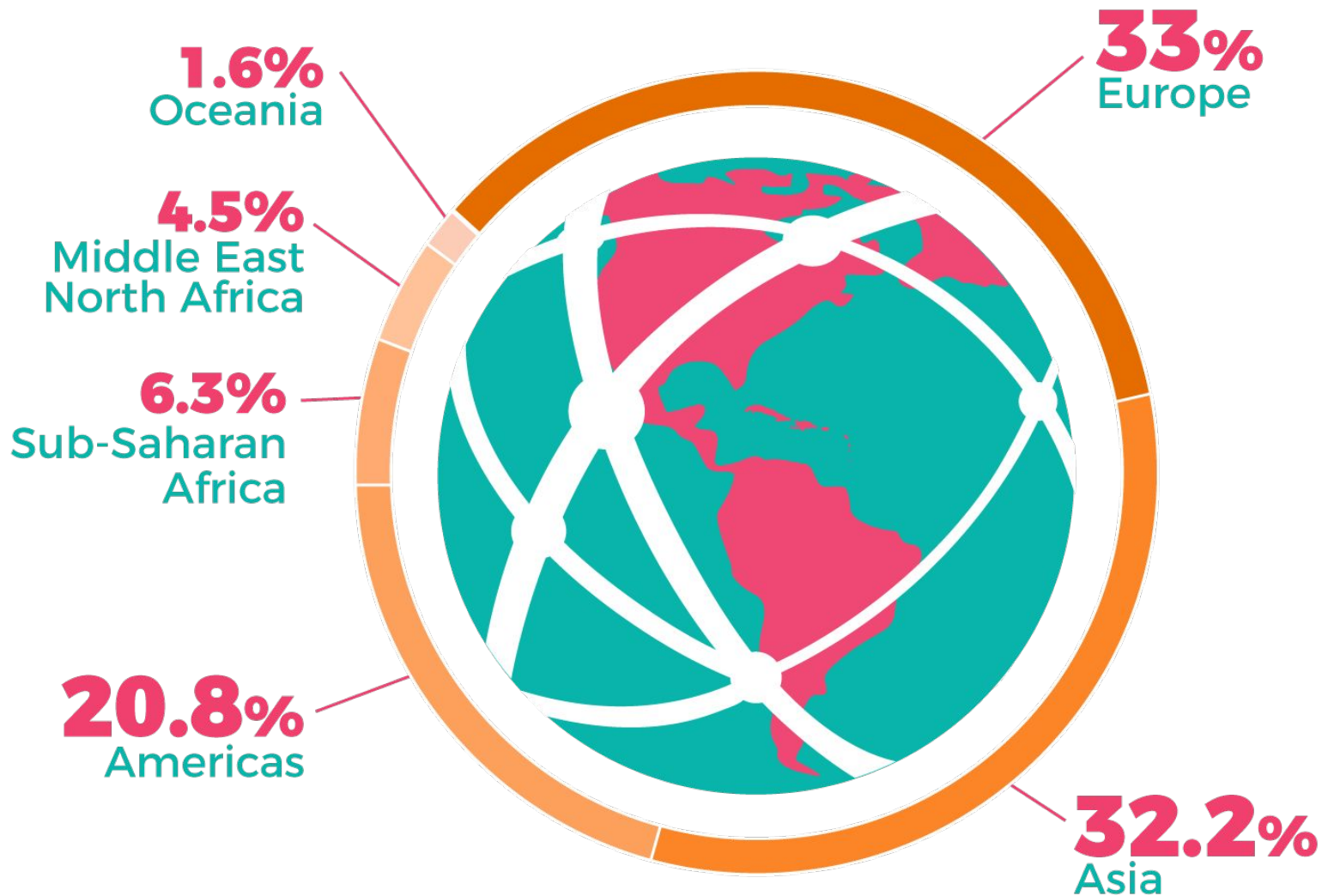
OUR HISTORY



Founded by President Dwight D. Eisenhower in 1956, Sister Cities International (SCI) is a nonpartisan 501(c)(3) nonprofit that serves as the national membership organization for individual sister cities, counties, and states across the United States. This network unites tens of thousands of citizen diplomats and volunteers in nearly 400 member communities with over 2,000 partnerships in more than 140 countries. SCI programs foster sub-national people-to-people and community-to-community partnerships through economic and business development projects, academic, cultural, and heritage activities, resilient programs, and municipal, sports, and youth programs and exchanges.

The Sister Cities International **Eisenhower Corporate Council** is a thriving network of business leaders and companies that have publicly demonstrated their support for global peace and prosperity. Joining the Eisenhower Corporate Council gives businesses the perfect opportunity to display their commitment to our mission of citizen diplomacy.

SISTER CITY RELATIONSHIPS BY REGION



THE 2024 ALL-AMERICAS SCI SUMMIT



About the 2024 SCI All Americas Summit

The All-Americas Sister Cities Summit will advance the shared missions of Sister Cities International and the U.S. State Department's Bureau of Educational and Cultural Affairs and the newly created department of subnational diplomacy: cultivating people-to-people ties to foster mutual understanding and peace with other countries.

SCI All Americas Summit Goals

- Bring together elected officials, citizen diplomats, and other key stakeholders from 35 countries across the Western Hemisphere in the spirit of friendship, mutual respect, and opportunity
- Strengthen, celebrate, and build new partnerships with the United States' closest neighbors
- Demonstrate the power of partnerships in trade, diplomacy, and peace across the Americas
- Spotlight unique ways city-to-city partnerships can flourish through mutual topics of interest such as tourism, trade, gastronomy, education, culture, and more

JOIN US AT THE SUMMIT



All Americas Sister Cities Summit

May 28-31, 2024



Henry B. González Convention Center

Summit Highlights

- **Tuesday, May 28** - Optional Site Tours
- **Wednesday, May 29** - Registration, SCI Academy and Welcome Reception
- **Thursday, May 30** - Opening Session, Keynote Luncheon, Concurrent Sessions
- **Friday, May 31** - Concurrent Sessions, Keynote Luncheon, Closing Event



Summit Registration and Details

Join hundreds of citizen diplomats from all over the Americas to discuss the impact of people-to-people diplomacy in your community.

<https://allamericassummit.sistercities.org>

PROPOSED DAILY AGENDA

Day 1

Tuesday, May 28
(Optional Site Tours)

Possible Morning Site Visits:

- Cultural (Walking Tour Downtown, Briscoe Museum of Western Art)
- Immigration (Migrant Resource Center, Food Bank)
- Economic Development (Pearl Corridor and Pearl District; Tech Port)
- Educational Site Visits (UTSA, Data Science, etc.)

Possible Afternoon Site Visits:

- Cultural (San Antonio Museum of Art; Witte Museum, McNay)
- Heritage (Mission San Jose and Mission Espada)
- Diversity, Equity, & Inclusion (Morgans Wonderland; CRIT)

Day 2

Wednesday, May 29
(Registration & evening Welcome Reception)

- (9 a.m. - 5 p.m.) Registration Opens
- (10 a.m. - 3 p.m.) Sister Cities International Leadership Academy,
OR
- (10 a.m. - 3 p.m.) The Municipality Workshop
- (6 p.m. - 8 p.m.) Mayor's Welcome Reception

Day 3

Thursday, May 30

(Opening session and All Day Forum with breakout sessions)

- Opening Session and Parade of Flags and Plenary
- High Level Mayoral dialogue
- 2-3 Morning Concurrent Sessions
- Lunch
- 2-3 Afternoon Concurrent Sessions
- Sister City Marketplace Presentations & Networking
- All day Exhibit Hall: trade, tourism, & education
- Reception/Activity TBD

Day 4

Friday, May 31

(All Day Forum with breakout sessions, and a Closing Event)

- Morning Plenary
- 2-3 Morning Concurrent Sessions
- Lunch
- 2-3 Afternoon Concurrent Sessions
- Sister City Marketplace Presentations & Networking
- All day Exhibit Hall: trade, tourism, & education
- Reception/Activity TBD

SPONSORSHIP LEVELS AND BENEFITS



Western Hemisphere Level

\$100,000+

30 full-summit registrations (each registration includes one ticket to the Closing Reception & Dinner)

Full Page with Premier Placement Advertisement in program book

SCI Donor Wall for 2024

Option for tote bag insert

Logo on conference website (placed in order of sponsorship level)

Logo on on-site signage

Membership in the Eisenhower Corporate Council

30 Additional tickets to Closing Reception & Dinner

Table at The Western Hemisphere Exhibit Hall

Social media promotion

Plenary speaker on panel or subject track

Panel Host

Recognition in Keynote

Feature Article in SCI newsletter

Special recognition as Host Sponsor/Event Underwriter

Opportunity to be the host of the Opening Ceremony or the Closing Reception & Dinner

Special Recognitions (Examples include logo on event name tags, logo on Tote Bags, Logo on Lanyards, etc.)

SPONSORSHIP LEVELS AND BENEFITS



All Americas Level

\$75,000+

22 full-summit registrations (each registration includes one ticket to the Closing Reception & Dinner)

Full Page with Premier Placement Advertisement in program book

Logo on conference website (placed in order of sponsorship level)

Logo on on-site signage

SCI Donor Wall for 2024

Option for tote bag insert

Membership in the Eisenhower Corporate Council

22 Additional tickets to Closing Reception & Dinner

Table at The Western Hemisphere Exhibit Hall

Social media promotion

Plenary speaker on panel or subject track

Panel Host

Recognition in Keynote

Feature Article in SCI newsletter

Special recognition as Host Sponsor/Event Underwriter

Opportunity to be the host of the Opening Ceremony or the Closing Reception & Dinner

Special Recognitions (Examples include logo on event name tags, logo on Tote Bags, Logo on Lanyards, etc.)

SPONSORSHIP LEVELS AND BENEFITS



Caribbean Level

\$50,000+

15 full-summit registrations (each registration includes one ticket to the Closing Reception & Dinner)

Full Page with Premier Placement Advertisement in program book

Logo on conference website (placed in order of sponsorship level)

Logo on on-site signage

SCI Donor Wall for 2024

Option for tote bag insert

Membership in the Eisenhower Corporate Council

15 Additional tickets to Closing Reception & Dinner

Table at The Western Hemisphere Exhibit Hall

Social media promotion

Plenary speaker on panel or subject track

Panel Host

Recognition in Keynote

Feature Article in SCI newsletter

Special recognition as Event Underwriter

Opportunity to be host of the Opening Ceremony or the Closing Reception & Dinner



Diamond Level \$35,000+	Sapphire Level \$25,000+
12 full summit registrations (each registration includes one ticket to the Closing Reception & Dinner)	10 full summit registrations (each registration includes one ticket to the Closing Reception & Dinner)
Full page advert in program book	Full page advert in program book
Logo on conference website (placed in order of sponsorship level)	Logo on conference website (placed in order of sponsorship level)
Logo on on-site signage	Logo on on-site signage
SCI Donor Wall for 2024	SCI Donor Wall for 2024
Option for tote bag insert	Option for tote bag insert
Membership in the Eisenhower Corporate Council	Membership in the Eisenhower Corporate Council
12 additional tickets to Closing Reception & Dinner	10 additional tickets to Closing Reception & Dinner
Table at The Western Hemisphere Exhibit Hall	Table at The Western Hemisphere Exhibit Hall
Social media promotion	Social media promotion
Plenary speaker on panel or subject track	Plenary speaker on panel or subject track
Panel Host	Panel Host
Recognition in Keynote	Recognition in Keynote
Feature Article in SCI newsletter	Feature Article in SCI newsletter



Platinum Level \$15,000+	Gold Level \$10,000+
8 full summit registrations (each registration includes one ticket to the Closing Reception & Dinner)	4 full summit registrations (each registration includes one ticket to the Closing Reception & Dinner)
1/2-page advert in program book	1/4-page advert in program book
Logo on conference website (placed in order of sponsorship level)	Logo on conference website (placed in order of sponsorship level)
Logo on on-site signage	Logo on on-site signage
SCI Donor Wall for 2024	SCI Donor Wall for 2024
Option for tote bag insert	Option for tote bag insert
Membership in the Eisenhower Corporate Council	Membership in the Eisenhower Corporate Council
8 additional tickets to Closing Reception & Dinner	4 additional tickets to Closing Reception & Dinner
Table at The Western Hemisphere Exhibit Hall	Table at The Western Hemisphere Exhibit Hall
Social media promotion	Social media promotion



Silver Level	Copper Level
<p>\$5,000+</p> <p>2 full summit registrations (each registration includes one ticket to the Closing Reception & Dinner)</p>	<p>\$2,500+</p> <p>1 full summit registrations (each registration includes one ticket to the Closing Reception & Dinner)</p>
Logo advert in program book	Logo advert in program book
Logo on conference website (placed in order of sponsorship level)	Logo on conference website (placed in order of sponsorship level)
Logo on on-site signage	Logo on on-site signage
SCI Donor Wall for 2024	SCI Donor Wall for 2024
Option for tote bag insert	Option for tote bag insert
Membership in the Eisenhower Corporate Council	Membership in the Eisenhower Corporate Council
2 additional tickets to Closing Reception & Dinner	1 additional tickets to Closing Reception & Dinner
Table at The Western Hemisphere Exhibit Hall	
Social media promotion	



Community Level \$1,000+	Friendship Level \$500+
Listing advert in program book	Listing advert in program book
Logo on conference website (placed in order of sponsorship level)	SCI Donor Wall for 2024 Listing
Logo on on-site signage	Option for tote bag insert
SCI Donor Wall for 2024	
Option for tote bag insert	

WESTERN HEMISPHERE EXHIBIT HALL



What is the Western Hemisphere Exhibit Hall at the 2024 Sister Cities International All Americas Summit?

The Western Hemisphere Exhibit Hall is a dynamic and bustling space in the main Henry B. González Convention Center where exhibitors have the opportunity to showcase their culture through art, music, cuisine, economy, sports, and education. The Western Hemisphere Exhibit Hall serves as a focal point where numerous summit attendees pass by, providing an expansive platform for exhibitors. With exposure to a large, diverse audience, it is an ideal opportunity for exhibitors to network, showcase their culture, and foster engagement.



How can I get a table at the Exhibit Hall?

Exhibit Hall tables can be obtained through sponsorship levels of \$5,000+ or exhibit tables can be purchased separately for \$2,000. Please contact Ricki Garrett at Rgarrett@SisterCities.org or Manny Pelaez at Megan.Garcia@SanAntonio.gov

What is included with a table at the Exhibit Hall?

A table at the Western Hemisphere Exhibit Hall includes one 6' table with surrounding space for displaying signage. AV setup may be available at an additional cost. Please notify us if AV is needed. We will do all we can to accommodate your needs.

SUMMARY OF SPONSORSHIP LEVELS AND BENEFITS

2024 All Americas Summit Sponsorship Levels	Western Hemisphere Level	All Americas Level	Caribbean Level	Diamond Level	Sapphire Level	Platinum Level	Gold Level	Silver Level	Copper Level	Exhibit Table Only	Community Level	Friendship Level
Benefits	\$100,000+	\$75,000+	\$50,000+	\$35,000+	\$25,000+	\$15,000+	\$10,000+	\$5,000+	\$2,500+	\$2,000+	\$1,000+	\$500+
	Full Page <small>with Premier Placement</small>	Full Page <small>with Premier Placement</small>	Full Page <small>with Premier Placement</small>	Full Page	Full Page	1/2 Page	1/4 Page	Logo	Logo		Listing	Listing
SCI Donor Wall for 2024	★	★	★	★	★	★	★	★	★		★	Listing
Option for tote bag insert	★	★	★	★	★	★	★	★	★		★	★
Logo on conference website (placed in order of sponsorship level)	★	★	★	★	★	★	★	★	★		★	
Logo on on-site signage	★	★	★	★	★	★	★	★	★		★	
Full summit registrations (includes one ticket to the Closing Reception & Dinner)	30	22	15	12	10	8	4	2	1			
Membership in the Eisenhower Corporate Council	★	★	★	★	★	★	★	★	★			
Additional tickets to Closing Reception & Dinner	30	22	15	12	10	8	4	2	1			
Table at The Western Hemisphere Exhibit Hall	★	★	★	★	★	★	★	★	★	★		
Social media promotion	★	★	★	★	★	★	★	★	★			
Plenary speaker on panel or subject track	★	★	★	★	★							
Panel Host	★	★	★	★	★							
Recognition in Keynote	★	★	★	★	★							
Feature article in SCI newsletter	★	★	★	★	★							
Special recognition as Event Underwriter	★	★	★									
Opportunity to be host of the Opening Ceremony or the Closing Reception & Dinner	★	★	★									
Special Recognitions (Examples include Logo on Lanyards)	★	★										

 <https://allamericassummit.sistercities.org/>

PAST SPONSORS



TAXPAYER ID & CERTIFICATION



Form W-9
 (Rev. October 2018)
 Department of the Treasury
 Internal Revenue Service

Request for Taxpayer Identification Number and Certification

Give Form to the requester. Do not send to the IRS.

Go to www.irs.gov/FormW9 for instructions and the latest information.

1 Name (as shown on your income tax return). Name is required on this line; do not leave this line blank.
Sister Cities International Inc.

2 Business name/disregarded entity name, if different from above

3 Check appropriate box for federal tax classification of the person whose name is entered on line 1. Check only **one** of the following seven boxes.

Individual/sole proprietor or single-member LLC
 C Corporation
 S Corporation
 Partnership
 Trust/estate
 Limited liability company. Enter the tax classification (C=C corporation, S=S corporation, P=Partnership) ▶ _____
 Note: Check the appropriate box in the line above for the tax classification of the single-member owner. Do not check LLC if the LLC is classified as a single-member LLC that is disregarded from the owner unless the owner of the LLC is another LLC that is not disregarded from the owner for U.S. federal tax purposes. Otherwise, a single-member LLC that is disregarded from the owner should check the appropriate box for the tax classification of its owner.
 Other (see instructions) ▶ _____

4 Exemptions (codes apply only to certain entities, not individuals; see instructions on page 3):
 Exempt payee code (if any) _____
 Exemption from FATCA reporting code (if any) _____
 (Applies to accounts maintained outside the U.S.)

5 Address (number, street, and apt. or suite no.) See instructions.
1012 14th Street NW, Suite 1400

6 City, state, and ZIP code
Washington, DC 20005

7 List account number(s) here (optional)

Part I Taxpayer Identification Number (TIN)

Enter your TIN in the appropriate box. The TIN provided must match the name given on line 1 to avoid backup withholding. For individuals, this is generally your social security number (SSN). However, for a resident alien, sole proprietor, or disregarded entity, see the instructions for Part I, later. For other entities, it is your employer identification number (EIN). If you do not have a number, see *How to get a TIN*, later.

Note: If the account is in more than one name, see the instructions for line 1. Also see *What Name and Number To Give the Requester* for guidelines on whose number to enter.

Social security number
 _____ - _____ - _____

or
 Employer identification number
5 2 - 0 8 5 9 0 2 1

Part II Certification

Under penalties of perjury, I certify that:

- The number shown on this form is my correct taxpayer identification number (or I am waiting for a number to be issued to me); and
- I am not subject to backup withholding because: (a) I am exempt from backup withholding, or (b) I have not been notified by the Internal Revenue Service (IRS) that I am subject to backup withholding as a result of a failure to report all interest or dividends, or (c) the IRS has notified me that I am no longer subject to backup withholding; and
- I am a U.S. citizen or other U.S. person (defined below); and
- The FATCA code(s) entered on this form (if any) indicating that I am exempt from FATCA reporting is correct.

Certification instructions. You must cross out item 2 above if you have been notified by the IRS that you are currently subject to backup withholding because you have failed to report all interest and dividends on your tax return. For real estate transactions, item 2 does not apply. For mortgage interest paid, acquisition or abandonment of secured property, cancellation of debt, contributions to an individual retirement arrangement (IRA), and generally, payments other than interest and dividends, you are not required to sign the certification, but you must provide your correct TIN. See the instructions for Part II, later.

Sign Here Signature of U.S. person ▶ *Ricki B. Haweth* Date ▶ **5/31/23**

General Instructions

Section references are to the Internal Revenue Code unless otherwise noted.

Future developments. For the latest information about developments related to Form W-9 and its instructions, such as legislation enacted after they were published, go to www.irs.gov/FormW9.

Purpose of Form

An individual or entity (Form W-9 requester) who is required to file an information return with the IRS must obtain your correct taxpayer identification number (TIN) which may be your social security number (SSN), individual taxpayer identification number (ITIN), adoption taxpayer identification number (ATIN), or employer identification number (EIN), to report on an information return the amount paid to you, or other amount reportable on an information return. Examples of information returns include, but are not limited to, the following:

- Form 1099-INT (interest earned or paid)
- Form 1099-DIV (dividends, including those from stocks or mutual funds)
- Form 1099-MISC (various types of income, prizes, awards, or gross proceeds)
- Form 1099-B (stock or mutual fund sales and certain other transactions by brokers)
- Form 1099-S (proceeds from real estate transactions)
- Form 1099-K (merchant card and third party network transactions)
- Form 1098 (home mortgage interest), 1098-E (student loan interest), 1098-T (tuition)
- Form 1099-C (canceled debt)
- Form 1099-A (acquisition or abandonment of secured property)

Use Form W-9 only if you are a U.S. person (including a resident alien), to provide your correct TIN.

If you do not return Form W-9 to the requester with a TIN, you might be subject to backup withholding. See What is backup withholding, later.

5 2 - 0 8 5 9 0 2 1

Thank you!



**For more information,
please contact:**

Ricki Garrett
Interim President & CEO
RGarrett@SisterCities.org
+1 601-940-6383
United States 

Manny Pelaez, SCI Board Member
Summit of the Americas, Fundraising Co-Chair
Pat.Wallace@SanAntonio.gov
+1 (210) 207-7086
 United States



SisterCities
INTERNATIONAL



**CITY OF
SAN ANTONIO**

Scan this QR
code for a digital
version of this
document





CONTACT INFORMATION:

Sponsor Name: _____

Company Name: _____

How did you hear about this sponsorship? _____

Company Contact Name: _____ Title: _____

Display Sponsor As: _____

Pledge Amount Total: _____

How much of the pledge is in-kind? _____

Company Phone: _____ Email: _____

Company Mailing Address: _____

Company Marketing Contact to Obtain Sponsor: _____

Company Website: _____

Notes: _____



**All Americas
SUMMIT**
Sister Cities
INTERNATIONAL



SPONSORSHIP LEVELS:

- | | | |
|--|---|---|
| <input type="checkbox"/> Western Hemisphere Level - \$100,000+ | <input type="checkbox"/> All Americas Level - \$75,000+ | <input type="checkbox"/> Caribbean Level - \$50,000+ |
| <input type="checkbox"/> Diamond Level - \$35,000+ | <input type="checkbox"/> Sapphire Level - \$25,000+ | <input type="checkbox"/> Platinum Level - \$15,000+ |
| <input type="checkbox"/> Gold Level - \$10,000+ | <input type="checkbox"/> Silver Level - \$5,000+ | <input type="checkbox"/> Copper Level - \$2,500+ |
| <input type="checkbox"/> Community Level - \$1,000+ | <input type="checkbox"/> Friendship Level - \$500+ | <input type="checkbox"/> Exhibitor Booth Only - \$2,000 |

PAYMENT INFO:

Invoice Our Company Check (enclosed) Payment Receipt Requested (check box)

Credit Card (please fill out information below)

Visa Mastercard Amex

(Note: Credit Card Fees Apply for additional 3%)

Credit Card Number: _____ Exp: _____ CVV: _____

Authorized Signature: _____ Date: _____

**Please send this form, your logo, and any questions to
Kerri Carter - Sister Cities, Director of Operations at kcarter@sistercities.org**